

STOCK CONTROL

by **Tony Mock**

21 May 2007

Stock control features in the syllabuses of several ACCA examination papers. The areas usually tested in these papers are:

- determining an economic order quantity (EOQ) – calculations to assess how many units of a particular stock item to order at a time
- finding an optimal re-order level (optimal ROL) – providing some idea of the level to which stocks can be allowed to fall before placing an order for more
- discussions of various practical aspects of stock management – often referred to by students with no practical experience as ‘theory’.

ADVANTAGES AND DISADVANTAGES OF HOLDING STOCK

The basis of the theoretical calculations of an EOQ and an optimal ROL is that there are advantages and disadvantages of holding stock (of buying stock in large or small quantities). The advantages include:

- the need to meet customer demand
- taking advantage of bulk discounts
- reducing total annual re-ordering cost

The disadvantages include:

- storage costs
- cost of capital tied up in stock
- deterioration, obsolescence, and theft

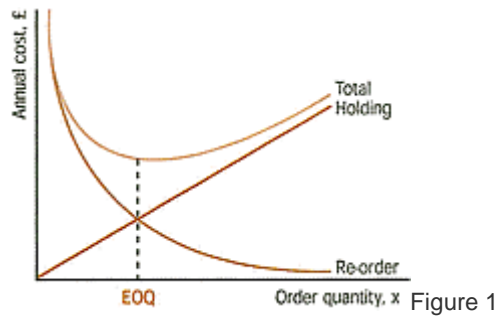
The aim behind the calculations of EOQ and ROL is to weigh up these, and other advantages and disadvantages and to find a suitable compromise level.

EOQ

When determining how much to order at a time, an organisation will recognise that:

- as order quantity rises, average stock rises and the total annual cost of holding stock rises
- as order quantity rises, the number of orders decreases and the total annual re-order costs decrease.

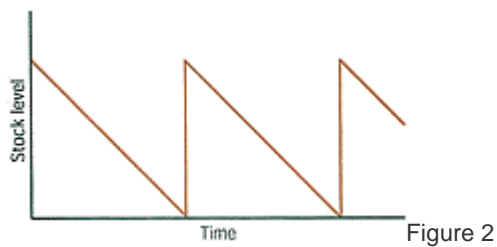
The total of annual holding and re-order costs first decreases, then increases. The point at which cost is minimised is the EOQ. This cost behaviour is illustrated by the graph in Figure 1.



The way in which this EOQ is calculated is based on certain assumptions, including:

- constant purchase price
- constant demand and constant lead-time
- holding-cost dependent on average stock
- order costs independent of order quantity

The assumptions result in a pattern of stock that can be illustrated graphically as shown in Figure 2.



The Formula

Using the standard ACCA notation in which:
 CH = cost of holding a unit of stock for a year
 CO = cost of placing an order
 D = annual demand

also:

TOC = total annual re-ordering cost
 THC = total annual holding cost
 x = order quantity

then:

average stock = $x/2$

$THC = x/2 \times CH$

and:

number of orders in a year = D/x

$TOC = D/x \times CO$

The total annual cost (affected by order quantity) is:

$C = THC + TOC = x/2 \times CH + D/x \times CO$

This formula is not supplied in exams – it needs to be understood (and remembered).

The value of x , order quantity, that minimises this total cost is the EOQ, given by an easily remembered formula:

$$EOQ = \sqrt{\frac{2 \times C_o \times D}{C_h}}$$

USE OF EOQ FORMULA

You need to take care over which figures you put into the formula, particularly in multiple-choice questions. The areas to beware of fall into two categories:

1. Relevant costs – only include those costs affected by order quantity. Only include those holding costs which (in total in a year) will double if you order twice as much at a time. Only include those order costs which (in total in a year) will double if you order twice as often. (Thus, fixed salaries to storekeepers or buying department staff will be excluded.)
2. Consistent units – ensure that figures inserted have consistent units. Annual demand and cost of holding a unit for a year. Both holding costs and re-ordering costs should be in £, or both in pence.

BULK DISCOUNTS

A common twist to exam questions is to ask students to evaluate whether bulk discounts are worth taking. While prices reduce, total annual holding costs will increase if more stock is ordered at a time, so the matter needs a little thought.

The common approach is one of trial and error. This involves finding the total annual cost (holding cost, re-ordering cost and purchasing cost) at the level indicated by the EOQ and at the level(s) where discount first becomes available.

Figure 3 shows total costs (now including cost of purchasing the stock) plotted against order quantity with discount incorporated.



Figure 3

Point A represents the cost at the order quantity indicated by the EOQ. If stock is ordered in larger quantities, total costs will increase to point B1, at which stage bulk discounts are available, bringing the costs down to point B. Any calculations will involve finding which cost out of A, B or C is the lowest, as Example 1 will show.

Example 1

Moore Limited uses 5,000 units of its main raw material per month. The material costs £4 per unit to buy, supplier's delivery costs are £25 per order and internal ordering costs are £2 per order. Total annual holding costs are £1 per unit. The supplier has offered a discount of 1% if 4,000 units of the material are bought at a time.

Required:

1. Establish the economic order quantity (EOQ) ignoring the discount opportunities.
2. Determine if the discount offer should be accepted.

$$EOQ = \sqrt{\frac{2 \times C_o \times D}{C_h}}$$

where:

$$\begin{aligned} C_o &= £25 + £2 &= £27 \\ D &= 12 \times 5,000 \text{ units} &= 60,000 \text{ units} \\ C_h & &= £1 \end{aligned}$$

$$EOQ = \sqrt{\frac{2 \times 27 \times 60,000}{1}} = \underline{1,800} \text{ units}$$

Example 1 solutions

RE-ORDER LEVELS

As important as how much to order at a time is the question of when to order more stock. If an order is placed too late, when stocks have been allowed to run too low, a 'stock-out' will occur, resulting in either a loss of production or loss of sales, or possibly both.

If orders are placed too soon, when there are still substantial supplies in stock, then stock levels and holding costs will be unnecessarily high. The re-order level as explained below should not be confused with the stock control levels referred to in textbooks – this article ignores these. When it comes to calculating re-order levels, three sets of circumstances can be envisaged.

LEAD-TIME IS ZERO

'Lead-time' is the interval between placing an order with a supplier and that order arriving. It is unlikely that this could be reduced to zero – it would require astonishingly co-operative and efficient suppliers. If it were possible, a re-order level of zero could be adopted. An organisation could simply wait until it ran out of stock, click its corporate fingers, and stock would arrive instantaneously.

CONSTANT DEMAND, FIXED FINITE LEAD-TIME

The assumption of constant demand is consistent with the assumptions underlying the EOQ formula. If suppliers take some time to provide goods, orders need to be placed in advance of running out. Figure 4 illustrates the problem and its solution.

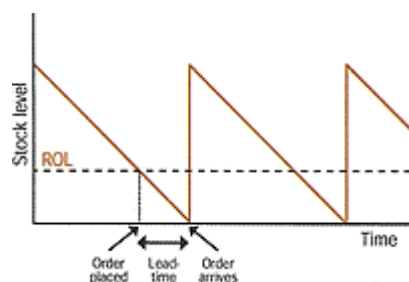


Figure 4

If the lead-time is, say, 5 days, an order has to be placed before stocks have been exhausted. Specifically, the order should be placed when there is still sufficient stock to last 5 days, i.e:

Re-order level (ROL) = Demand in lead-time

So, if lead-time for a particular stock item is 5 days and daily demand is 30 units, the re-order level would be 5 days at 30 units per day, 150 units.

VARIABLE DEMAND IN THE LEAD-TIME

If demand in lead-time varied, it could be described by means of some form of probability distribution. Taking the previous example of the demand in lead-time being 150 units, we're considering the possibility of demand being more than 150 or less than that. See Figure 5.

Note: This aspect of stock control produces a few problems. The EOQ formula requires that demand (and lead-time) for a stock item be constant. Here the possibility of demand varying or lead-time varying or both varying is introduced. Setting that problem aside, most ACCA syllabuses at the lower levels avoid any discussion of uncertainty or probability distributions. However, uncertainty in lead-time demand in stock control has featured in exams.

In these circumstances, a firm could place an order with a supplier when the stock fell to 150 units (the average demand in the lead-time). However, there's a 33% chance ($0.23 + 0.08 + 0.02 = 0.33$) that demand would exceed this re-order level, and the organisation would be left with a problem. It is therefore advisable to increase the re-order level by an amount of 'buffer stock' (safety stock).

BUFFER STOCK

Buffer stock is simply the amount by which ROL exceeds average demand in lead-time. It is needed when there is uncertainty in lead-time demand to reduce the chance of running out of stock and reduce the cost of such shortages.

If a ROL of 160 units was adopted, this would correspond to a buffer stock of 10 units (and reduce the chance of running out of stock to $0.08 + 0.02 = 0.1$, or 10%). A ROL of 170 is equivalent to a buffer stock of 20 and reduces the chance of running out to 2%, and a ROL of 180 implies 30 units of buffer stock (and no chance of running short).

OPTIMAL RE-ORDER LEVELS

This leaves the problem of how to calculate the optimal ROL. There are two common ways in which one could determine a suitable re-order level (if the information was available):

1. A tabular approach – Calculate, for each possible ROL (each level of buffer stock) the cost of holding different levels of buffer stock and the cost incurred if the buffer is inadequate ('stock-out' costs). The optimal re-order level is that level at which the total of holding and stock-out costs are a minimum.
2. A 'service level' approach – An organisation has to determine a suitable level of service (an acceptably small probability that it would run out of stock), and would need to know the nature of the probability distribution for lead-time demand. These two would be used to find a suitable ROL.

Tony Mock is a freelance lecturer and writer and an ACCA subject coordinator